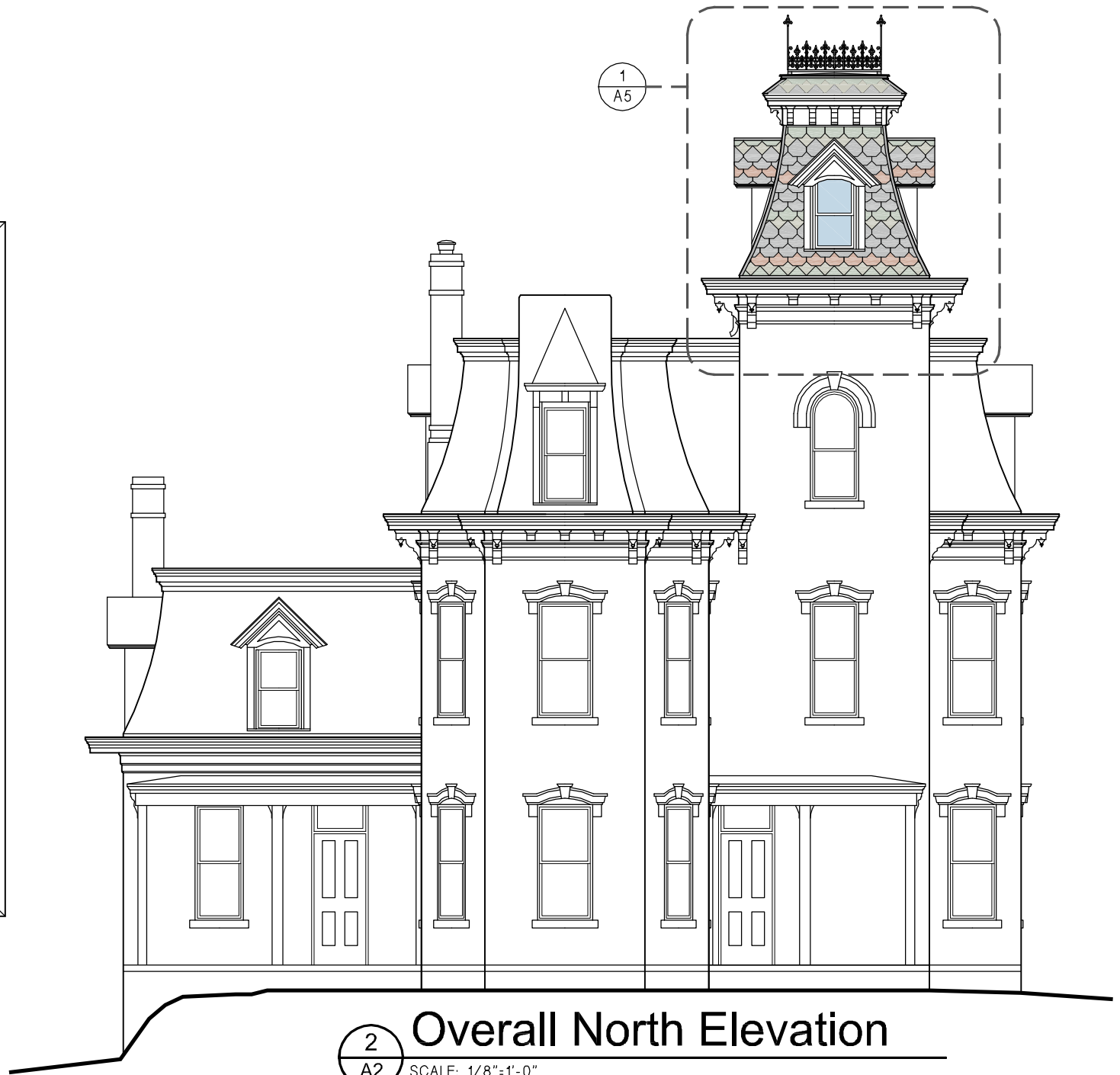


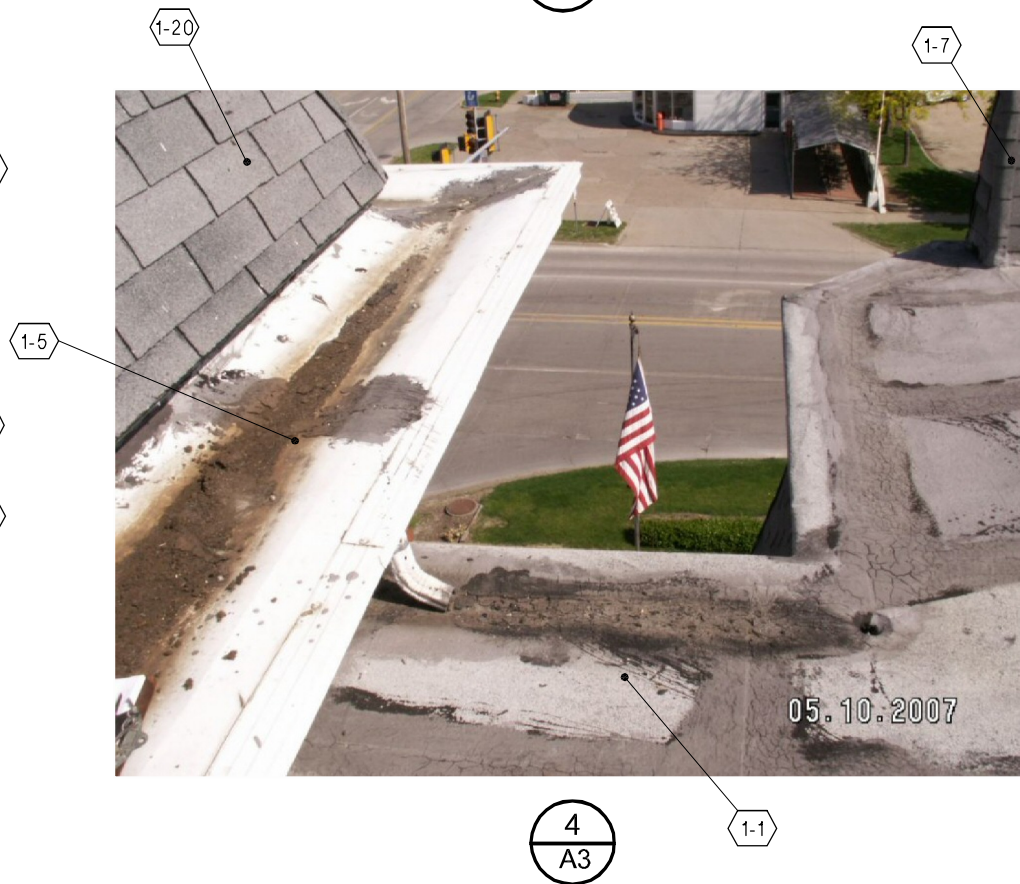
1  
A2 Overall Roof Plan  
SCALE: 1/8"=1'-0"



2  
A2 Overall North Elevation  
SCALE: 1/8"=1'-0"

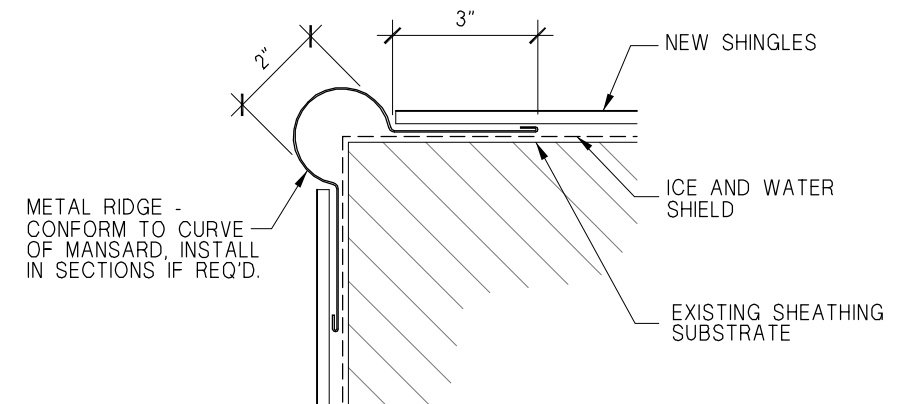


**BLAIR HOUSE**  
**TOWER ROOF REHABILITATION**  
 E. Washington Street & S. 2nd Avenue  
 Washington, Iowa



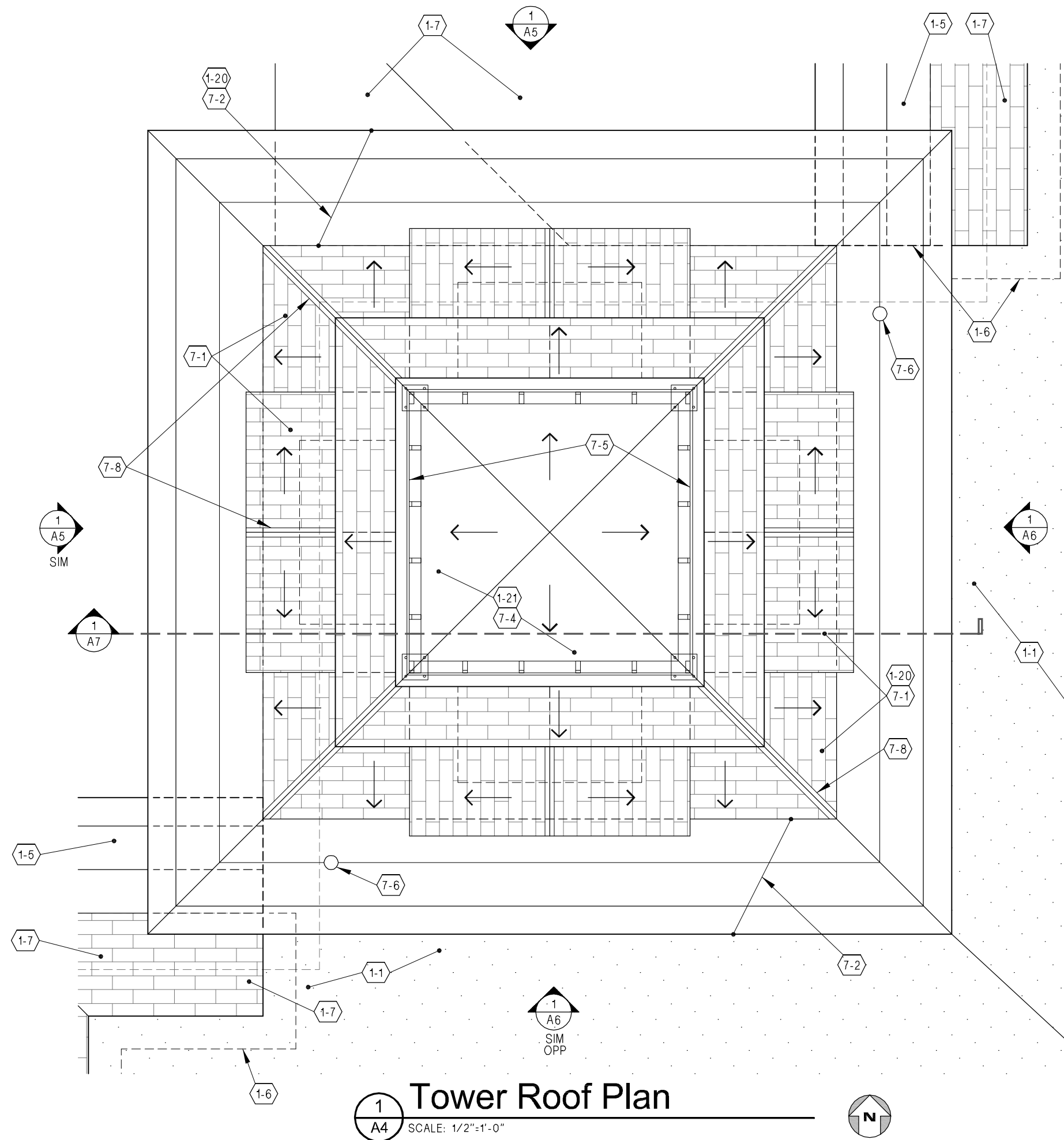
## Keynote Legend

- 1-1 EXISTING BITUMINOUS ROOFING - PROTECT AND MAINTAIN.
- 1-2 EXISTING BRICK - PROTECT AND MAINTAIN, SEE FINISH NOTE ON SHEET A9.
- 1-3 EXISTING WINDOW - PROTECT AND MAINTAIN, SEE FINISH NOTE ON SHEET A9.
- 1-4 EXISTING BRACKET - PROTECT AND MAINTAIN, SEE FINISH NOTE ON SHEET A9.
- 1-5 EXISTING SHEET METAL GUTTER - THOROUGHLY SCRAPE AND CLEAN IN PREPARATION FOR NEW EPDM LINER.
- 1-6 EXISTING WALL AND/OR ROOF BELOW - PROTECT AND MAINTAIN.
- 1-7 EXISTING SHINGLES - NO WORK. PROTECT AND MAINTAIN.
- 1-8 EXISTING WOOD SIDING AND/OR TRIM - PROTECT AND MAINTAIN. SEE FINISH NOTE ON SHEET A9.
  
- 1-20 REMOVE EXISTING SHINGLES TO SHEATHING, TYPICAL ALL FOUR SIDES. SEE SHEATHING NOTE ON SHEET A9.
- 1-21 REMOVE EXISTING ROOFING TO SHEATHING - SEE SHEATHING NOTE ON SHEET A9.
- 1-22 REMOVE EXISTING DOWNSPOUT.



**1** Mansard Ridge Detail  
A9 SCALE: 3"=1'-0"

**BLAIR HOUSE**  
**TOWER ROOF REHABILITATION**  
 E. Washington Street & S. 2nd Avenue  
 Washington, Iowa



## Keynote Legend

- 1-1 EXISTING BITUMINOUS ROOFING - PROTECT AND MAINTAIN.
- 1-2 EXISTING BRICK - PROTECT AND MAINTAIN, SEE FINISH NOTE ON SHEET A9.
- 1-3 EXISTING WINDOW - PROTECT AND MAINTAIN, SEE FINISH NOTE ON SHEET A9.
- 1-4 EXISTING BRACKET - PROTECT AND MAINTAIN, SEE FINISH NOTE ON SHEET A9.
- 1-5 EXISTING SHEET METAL GUTTER - THOROUGHLY SCRAPE AND CLEAN IN PREPARATION FOR NEW EPDM LINER.
- 1-6 EXISTING WALL AND/OR ROOF BELOW - PROTECT AND MAINTAIN.
- 1-7 EXISTING SHINGLES - NO WORK. PROTECT AND MAINTAIN.
- 1-8 EXISTING WOOD SIDING AND/OR TRIM - PROTECT AND MAINTAIN. SEE FINISH NOTE ON SHEET A9.
  
- 1-20 REMOVE EXISTING SHINGLES TO SHEATHING, TYPICAL ALL FOUR SIDES. SEE SHEATHING NOTE ON SHEET A9.
- 1-21 REMOVE EXISTING ROOFING TO SHEATHING - SEE SHEATHING NOTE ON SHEET A9.
- 1-22 REMOVE EXISTING DOWNSPOUT.
  
- 7-1 NEW SHINGLE ROOFING, TYPICAL ALL FOUR SIDES.
- 7-2 INSTALL NEW EPDM LINER OVER EXISTING GUTTER.
- 7-3 INSTALL NEW METAL DRIP EDGE - SEE NOTES SHEET A9.
- 7-4 INSTALL NEW METAL ROOF SYSTEM ENTIRE UPPER ROOF - SEE METAL ROOF NOTES ON SHEET A9.
- 7-5 INSTALL NEW METAL BRACKETS, CRESTING AND CORNER FINIALS - SEE CRESTING NOTES ON SHEET A9.
- 7-6 NEW ROOF DRAIN - SEE ROOF DRAIN NOTES ON SHEET A9.
- 7-7 NEW DOWNSPOUT TO MATCH EXISTING.
- 7-8 NEW METAL RIDGE FLASHING - SEE NOTES ON SHEET A9.
- 7-9 INSTALL NEW CEMENT BOARD AT DORMERS - SEE CEMENT BOARD NOTES ON SHEET A9.

**1 Tower Roof Plan**  
 SCALE: 1/2"=1'-0"

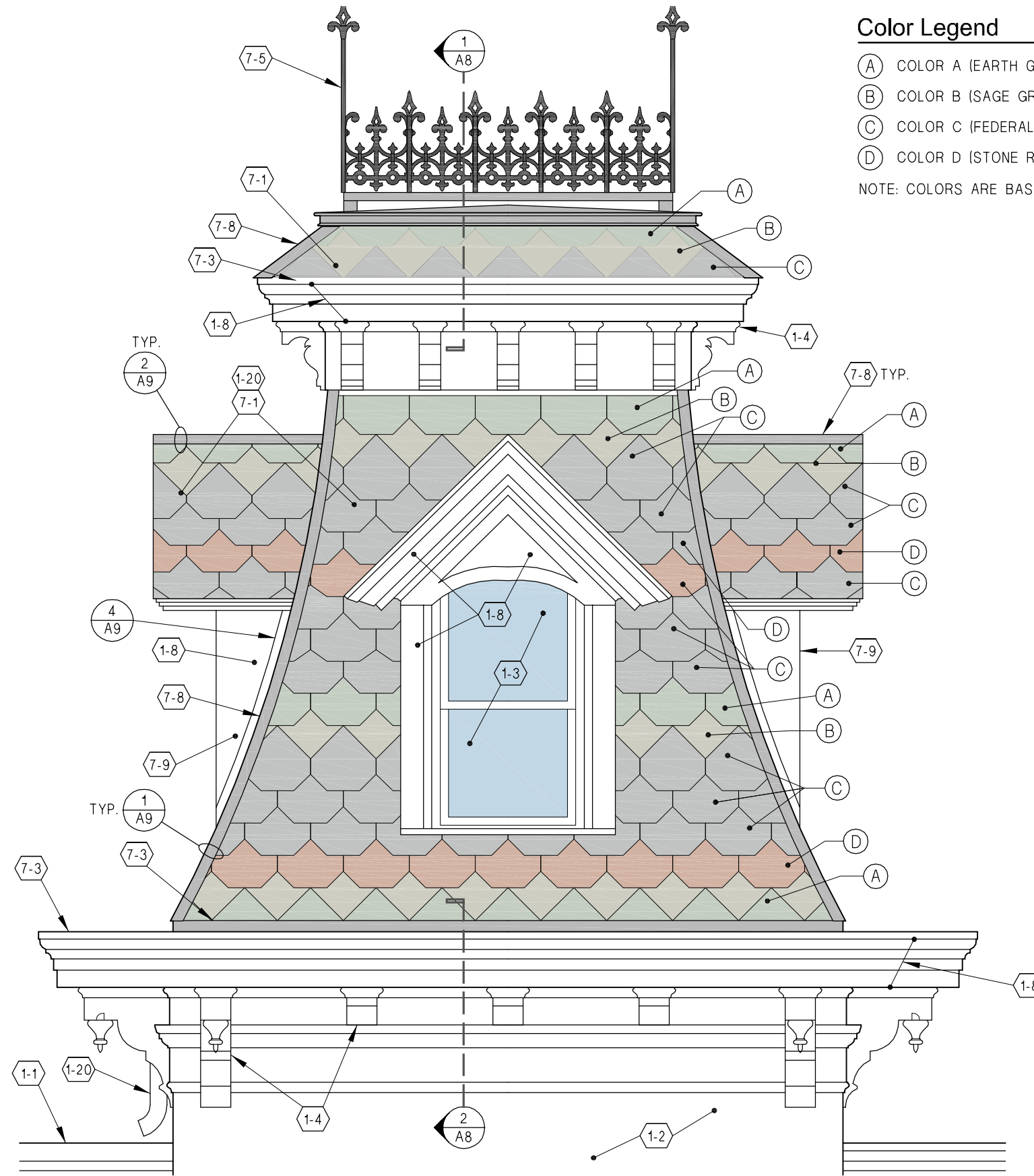
**BLAIR HOUSE**  
**TOWER ROOF REHABILITATION**  
 E. Washington Street & S. 2nd Avenue  
 Washington, Iowa

# Keynote Legend

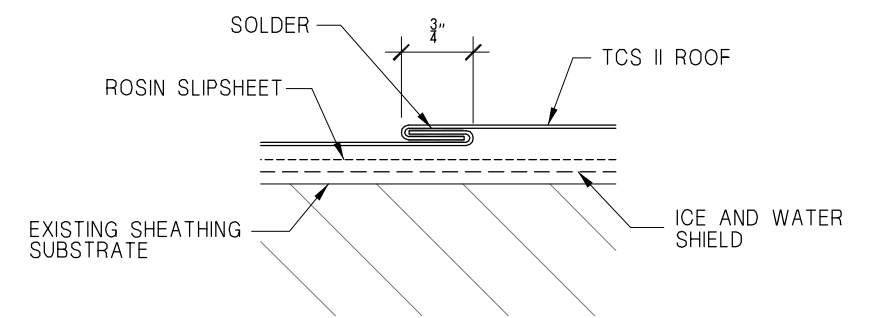
- 1-1 EXISTING BITUMINOUS ROOFING - PROTECT AND MAINTAIN.
- 1-2 EXISTING BRICK - PROTECT AND MAINTAIN, SEE FINISH NOTE ON SHEET A9.
- 1-3 EXISTING WINDOW - PROTECT AND MAINTAIN, SEE FINISH NOTE ON SHEET A9.
- 1-4 EXISTING BRACKET - PROTECT AND MAINTAIN, SEE FINISH NOTE ON SHEET A9.
- 1-5 EXISTING SHEET METAL GUTTER - THOROUGHLY SCRAPE AND CLEAN IN PREPARATION FOR NEW EPDM LINER.
- 1-6 EXISTING WALL AND/OR ROOF BELOW - PROTECT AND MAINTAIN.
- 1-7 EXISTING SHINGLES - NO WORK. PROTECT AND MAINTAIN.
- 1-8 EXISTING WOOD SIDING AND/OR TRIM - PROTECT AND MAINTAIN. SEE FINISH NOTE ON SHEET A9.
  
- 1-20 REMOVE EXISTING SHINGLES TO SHEATHING, TYPICAL ALL FOUR SIDES. SEE SHEATHING NOTE ON SHEET A9.
- 1-21 REMOVE EXISTING ROOFING TO SHEATHING - SEE SHEATHING NOTE ON SHEET A9.
- 1-22 REMOVE EXISTING DOWNSPOUT.
  
- 7-1 NEW SHINGLE ROOFING, TYPICAL ALL FOUR SIDES.
- 7-2 INSTALL NEW EPDM LINER OVER EXISTING GUTTER.
- 7-3 INSTALL NEW METAL DRIP EDGE - SEE NOTES SHEET A9.
- 7-4 INSTALL NEW METAL ROOF SYSTEM ENTIRE UPPER ROOF - SEE METAL ROOF NOTES ON SHEET A9.
- 7-5 INSTALL NEW METAL BRACKETS, CRESTING AND CORNER FINIALS - SEE CRESTING NOTES ON SHEET A9.
- 7-6 NEW ROOF DRAIN - SEE ROOF DRAIN NOTES ON SHEET A9.
- 7-7 NEW DOWNSPOUT TO MATCH EXISTING.
- 7-8 NEW METAL RIDGE FLASHING - SEE NOTES ON SHEET A9.
- 7-9 INSTALL NEW CEMENT BOARD AT DORMERS - SEE CEMENT BOARD NOTES ON SHEET A9.

## Color Legend

- (A) COLOR A (EARTH GREEN)
  - (B) COLOR B (SAGE GREEN)
  - (C) COLOR C (FEDERAL GRAY)
  - (D) COLOR D (STONE RED)
- NOTE: COLORS ARE BASED ON ECOSTAR.

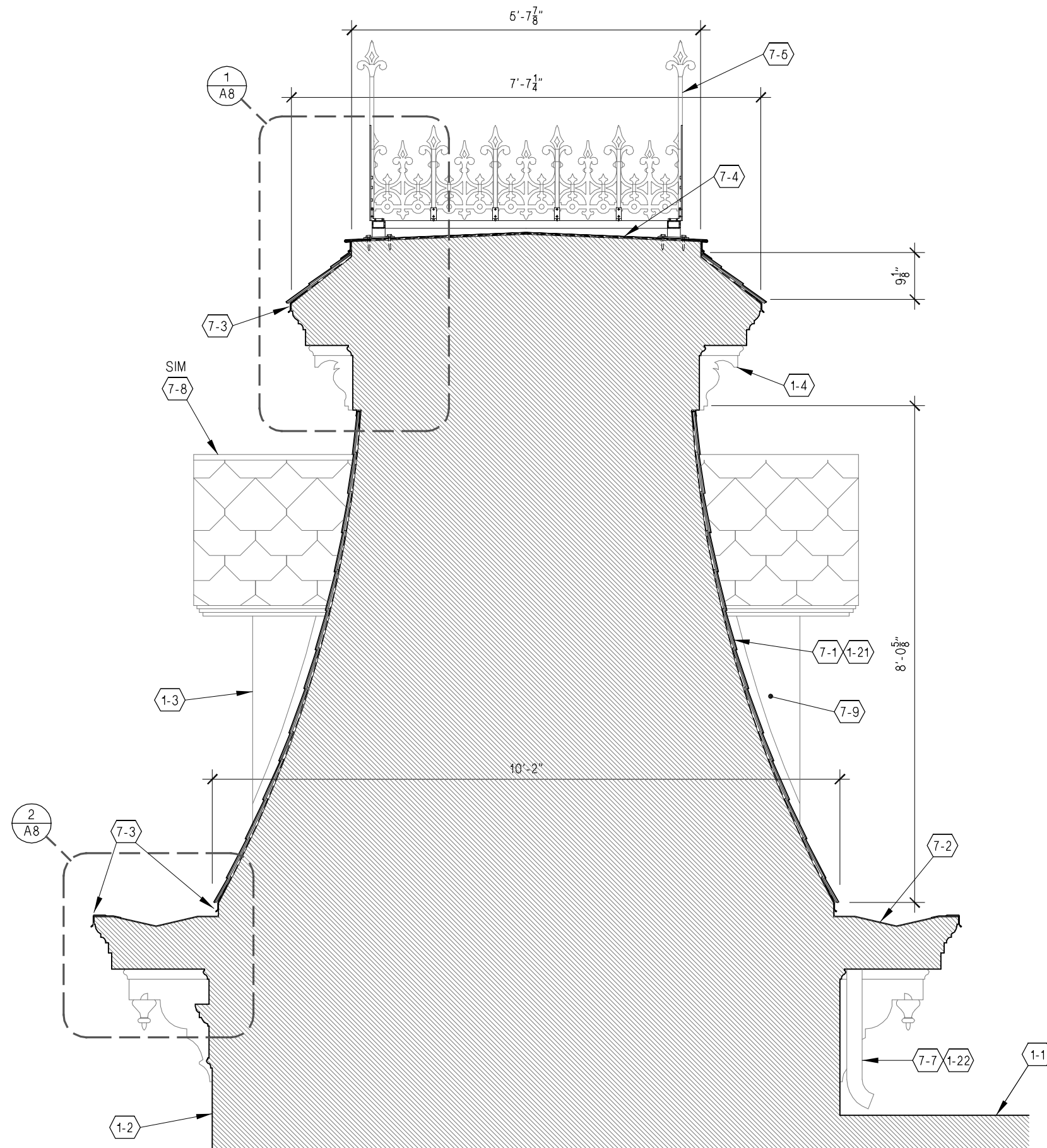


**1 Tower North Elevation**  
 SCALE: 1/2"=1'-0"  
 West Elevation Similar



**3 Lock Seam Detail**  
 SCALE: 6"=1'-0"

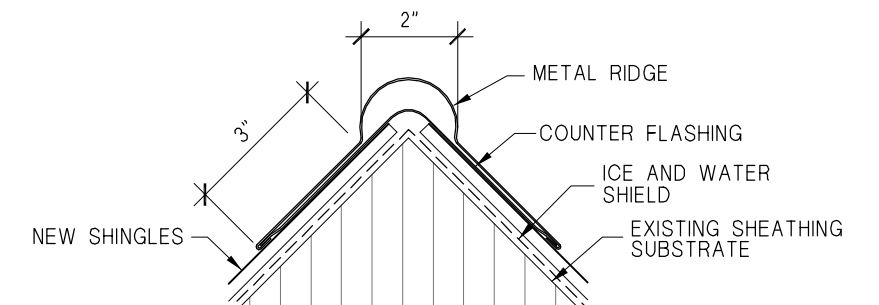
**BLAIR HOUSE**  
**TOWER ROOF REHABILITATION**  
 E. Washington Street & S. 2nd Avenue  
 Washington, Iowa



**1 Tower Cross Section**  
 A7 SCALE: 1/2"=1'-0"

## Keynote Legend

- 1-1 EXISTING BITUMINOUS ROOFING - PROTECT AND MAINTAIN.
- 1-2 EXISTING BRICK - PROTECT AND MAINTAIN, SEE FINISH NOTE ON SHEET A9.
- 1-3 EXISTING WINDOW - PROTECT AND MAINTAIN, SEE FINISH NOTE ON SHEET A9.
- 1-4 EXISTING BRACKET - PROTECT AND MAINTAIN, SEE FINISH NOTE ON SHEET A9.
- 1-5 EXISTING SHEET METAL GUTTER - THOROUGHLY SCRAPE AND CLEAN IN PREPARATION FOR NEW EPDM LINER.
- 1-6 EXISTING WALL AND/OR ROOF BELOW - PROTECT AND MAINTAIN.
- 1-7 EXISTING SHINGLES - NO WORK. PROTECT AND MAINTAIN.
- 1-8 EXISTING WOOD SIDING AND/OR TRIM - PROTECT AND MAINTAIN. SEE FINISH NOTE ON SHEET A9.
  
- 1-20 REMOVE EXISTING SHINGLES TO SHEATHING, TYPICAL ALL FOUR SIDES. SEE SHEATHING NOTE ON SHEET A9.
- 1-21 REMOVE EXISTING ROOFING TO SHEATHING - SEE SHEATHING NOTE ON SHEET A9.
- 1-22 REMOVE EXISTING DOWNSPOUT.
  
- 7-1 NEW SHINGLE ROOFING, TYPICAL ALL FOUR SIDES.
- 7-2 INSTALL NEW EPDM LINER OVER EXISTING GUTTER.
- 7-3 INSTALL NEW METAL DRIP EDGE - SEE NOTES SHEET A9.
- 7-4 INSTALL NEW METAL ROOF SYSTEM ENTIRE UPPER ROOF - SEE METAL ROOF NOTES ON SHEET A9.
- 7-5 INSTALL NEW METAL BRACKETS, CRESTING AND CORNER FINIALS - SEE CRESTING NOTES ON SHEET A9.
- 7-6 NEW ROOF DRAIN - SEE ROOF DRAIN NOTES ON SHEET A9.
- 7-7 NEW DOWNSPOUT TO MATCH EXISTING.
- 7-8 NEW METAL RIDGE FLASHING - SEE NOTES ON SHEET A9.



**2 Dormer Ridge Detail**  
 A9 SCALE: 3"=1'-0"

**BLAIR HOUSE**  
**TOWER ROOF REHABILITATION**  
 E. Washington Street & S. 2nd Avenue  
 Washington, Iowa

1/4" MOUNTING PLATE, FABRICATE  
 PLATE AS REQUIRED TO ALIGN WITH  
 EXISTING ROOF SLOPE. VERIFY  
 CONDITIONS AT EACH CORNER.

SET PLATE ON 1/8" NEOPRENE,  
 FASTEN TO SHEATHING WITH  
 1/2" LAG BOLTS WITH NEOPRENE  
 WASHERS. SET NEOPRENE PLATE  
 IN BED OF SEALANT.

2" HIGH MINIMUM STUB 2-1/2" X 3/16" SQUARE TUBE  
 BELOW AS REQUIRED TO MAINTAIN 2" SPACE BETWEEN  
 BOTTOM OF FRAME AND ROOF SURFACE.

CRESTING FRAME  
 MOUNTING PLATE  
 SCALE: 1 1/2":1'-0"

CRESTING AND MONTING  
 BRACKETS BEYOND

EPDM LAP FLASHING

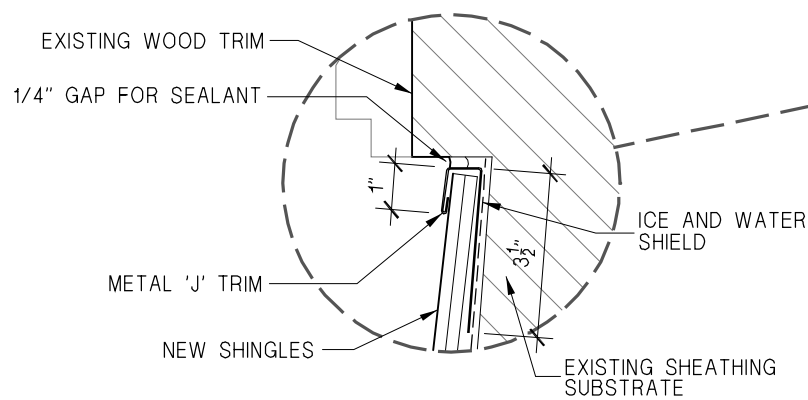
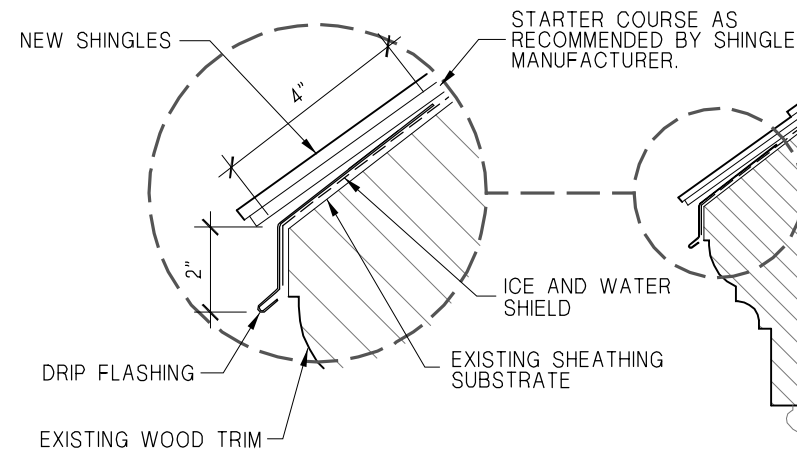
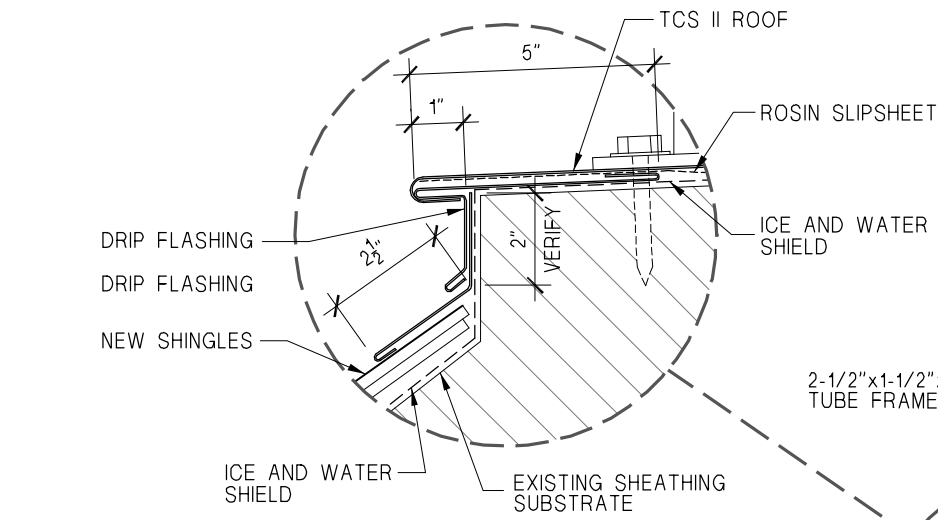
DRIP FLASHING

EXISTING WOOD TRIM

DRIP FLASHING  
 EPDM ADHERED  
 TO GUTTER

EXISTING METAL  
 FLAT GUTTER

STARTER COURSE AS  
 RECOMMENDED BY SHINGLE  
 MANUFACTURER.



**1** Section At Cresting  
 A8 SCALE: 1 1/2":1'-0"

**2** Section At Gutter  
 A8 SCALE: 1 1/2":1'-0"

**BLAIR HOUSE  
 TOWER ROOF REHABILITATION**  
 E. Washington Street & S. 2nd Avenue  
 Washington, Iowa